

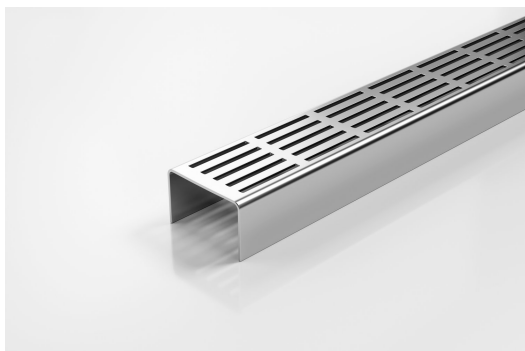


ARCHITECTURAL  
GRATES + DRAINS



# 65PS40

## Linear Drain



**Code** 65PS40

**Range** Special Assembly

**Grate Style** PS

**Category** Components

**Channel Material** Stainless Steel

**Steel Grade** 316

Grates longer than 1500mm supplied in sections. Tile Inserts longer than 1200mm supplied in sections. Channels over 3000mm supplied in sections with joiner. +/-2mm tolerance on dimensions.

The 65PS40 is our Punched Slot grate designed to be used with our Special Assembly units 65G100 and 65G90.

A 65mm wide UPVC channel is connected via downpipes at 200mm intervals to sockets in a 100mm drain below. This allows the channel to be installed level while the drainpipe is given sufficient fall to be self-cleaning.

Please be aware that depending on the installation environment, for a pool installation or close to a surf beach, you may need to have your stainless steel grates electropolished.

This unique drainage system was recognised for its innovation by a DesignMark at the Australian International Design Awards.

### SPECIFICATIONS + DIMENSIONS

Channel Width	65mm				
Channel Depth	40mm				
Length(s)	900mm	1000mm	1200mm	1500mm	
Outlet Size	N/A				

### STORMTECH COLOUR FINISHES



Stainless Steel



Electropolished

Electroplate finishes subject to natural variation with time and local environment. Factors such as pools/surf beaches may require electropolishing. Contact us for suitability.

### PRODUCT APPLICATIONS

Balcony Drainage  
Courtyard / Patio Drainage  
Pool and Spa Area Drainage  
Hospitality Drainage  
Paved Area Drainage  
Special Needs Drainage

Threshold Drainage  
Suspended Slab Drainage



Copyright © Stormtech Pty Ltd. Patent 733361. Drawings not to scale, please use dimensions shown.  
Downloaded 04/08/2025 (please check for updates)

Visit **stormtech.com.au**  
for tools + inspiration.

Phone **1300 653 403**

Email **info@stormtech.com.au**